

Refrigeration Equipment 2-Door Refrigerated Work Top 61" Long

ITEM # _____

MODEL # _____

NAME # _____

SIS # _____

AIA # _____



738301 (KCHUCWT60R)

2-Door Refrigerated Work Top
61" Long

Short Form Specification

Item No. _____

2-door refrigerator counter top, with worktop, with exterior back panel, exterior bottom panel, and exterior top panel in galvanized steel, exterior side panel in 430 stainless steel; interior back, top and bottom panels in 304 stainless steel. Fin & tube condenser to improve the performances in high temperature environments. Automatic Defrost Cooling System and temperature control. Vinyl heavy duty adjustable, easy to handle and clean shelves. External temperature display.

R600a gas in refrigeration circuit.

ETL Safety and Sanitation certified.

3/5 Years warranty.

Main Features

- Integrated built in backsplash, minimizes material waste
- External temperature display.
- Removable gasket for easy cleaning operations.
- Fin & Tube Condenser improves performance in high temperature environments.
- Automatic Defrost Cooling System provides worry-free performance.
- Electronic Temperature Control, quick and simple to set, with control display for easy monitoring.
- Heavy duty Vinyl coated steel shelves.
- Cabinet completely insulated with high density polyurethane for low environmental impact.
- Adjustable shelves for flexible storage
- Back bottom mounted cooling unit guarantee an easy access and cleaning.
- Removable rubber bumper guards for airflow spacing and shock absorption

Construction

- Stainless steel interior and exterior, durable and easy to clean for daily commercial use.
- Self-closing door with 90-degree stay-open feature.
- White polystyrene interior side panels, for high impact resistance
- Pre-wired heavy duty power cord.
- Heavy duty door hinges.
- Heavy duty casters.
- Magnetic gasket removable without tools for easy cleaning.
- Stainless steel worktop, durable functionality

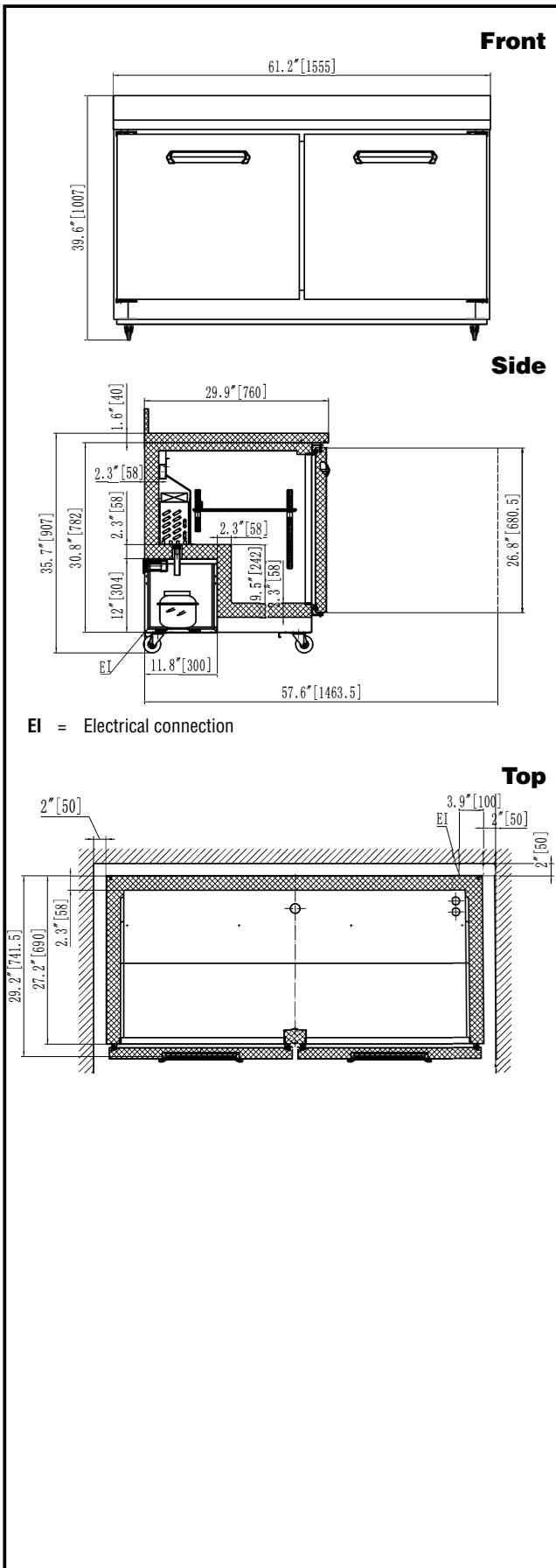
Sustainability

- CFC and HCFC free (ecological refrigerant type: R600a).
- High efficiency components to minimize the energy consumption still guaranteeing the highest performances.
- 60 mm insulation for energy saving.

Optional Accessories

- 1 Adjustable Foot PNC 206445
- Drawers Kit for L/R section of 60" Mega Top, Salad Top, Undercounter refrigerator, and Work Top refrigerator PNC 880617

APPROVAL: _____



Electric

Supply voltage:	115 V/1 ph/60 Hz
Electrical power, max:	0.31 kW
Plug type:	USA NEMA 5-15P

Capacity:

Gross capacity:	15.5 cu.feet
-----------------	--------------

Key Information:

Number and type of grids (included):	2 - Vinyl-Coated Steel
Warranty:	3 / 5 years
Door hinges:	1 Left+1 Right
Capacity:	15.5 cu.ft.
External dimensions, Width:	61 1/4" (1555 mm)
External dimensions, Depth:	29 15/16" (760 mm)
External dimensions, Height:	39 5/8" (1007 mm)
Number and type of doors:	2 Full
Internal Dimensions (depth):	24 13/16" / (630 mm)
Internal Dimensions (height):	24 7/16" / (620 mm)
Internal Dimensions (width):	55 1/8" / (1400 mm)
Shipping height:	42 1/8" (1070 mm)
Shipping weight:	311 lbs (141 kg)
Shipping volume:	48.21 ft ³ (1.37 m ³)
Type of external material:	Stainless Steel
Type of internal material:	Polystyrene
Approvals	ENERGY STAR;ETL C&US;ETL SANITATION

Refrigeration Data

Condenser type:	Fin & tube
Operating temperature min.:	32 °F
Compressor power:	1/8 hp
Operating temperature max.:	41 °F
Defrost type:	Auto Defrost

Sustainability

Current consumption:	3 Amps
Refrigerant type:	R600a
Refrigerant weight:	80 g



Refrigeration Equipment
2-Door Refrigerated Work Top 61" Long

The company reserves the right to make modifications to the products without prior notice. All information correct at time of printing.